

This drawing is copyright. It is sent to you in confidence and must not be reproduced or disclosed to third parties without our prior permission. Do not scale from this drawing. This drawing is to be read in conjunction with all relevant consultants, specialist manufacturers drawings and specifications. Any discrepancies in dimensions or details on or between these drawings should be drawn to our attention. All dimensions are in millimetres unless noted otherwise. Any surveyed information incorporated within this drawing cannot be guaranteed as accurate unless confirmed by fixed dimension.

REV	DESCRIPTION	BY	CHKD	DATE
P1	FIRST PRELIMINARY ISSUE	MJR	JY	11/10/13
P2	CORRECTIONS TO COLOURED ELEVATION	MG	MJR	14/10/13
P3	COLOURED ELEVATION B-B & E-E ADDED	KH	MG	22/10/13
P4	ELEVATIONS REVISED TO SUIT PLANS	MJR	MG	30/10/13
P5	ELEVATIONS REVISED TO SUIT PLANS	MJR	MG	5/11/13
P6	COLOURED ELEVATIONS ADDED	MG	JY	12/11/13
P7	REVISED TO SUIT PLANS	MJR	MG	17/1/14



PROPOSED ELEVATION A-A
1:200



PROPOSED ELEVATION C-C
1:200



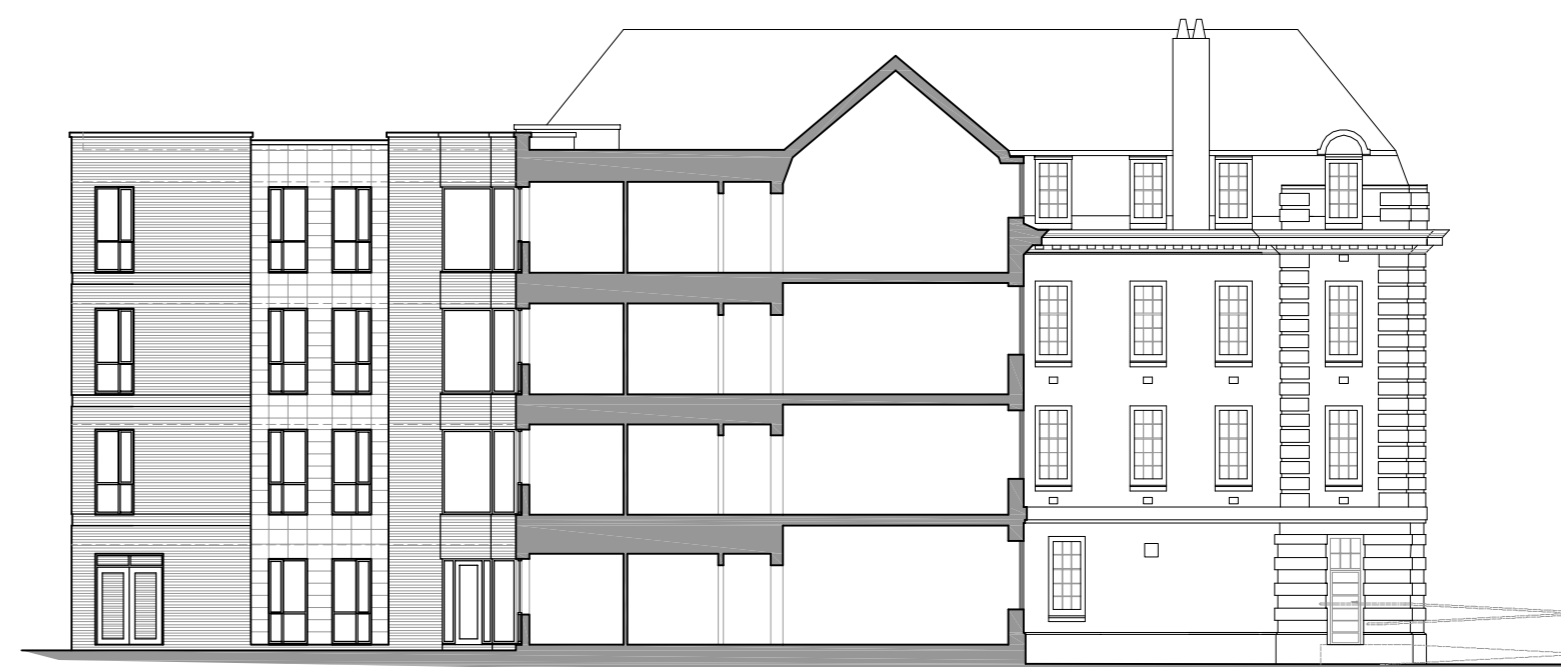
PROPOSED ELEVATION B-B
1:200



ELEVATION D-D
1:200



PROPOSED ELEVATION E-E
1:200



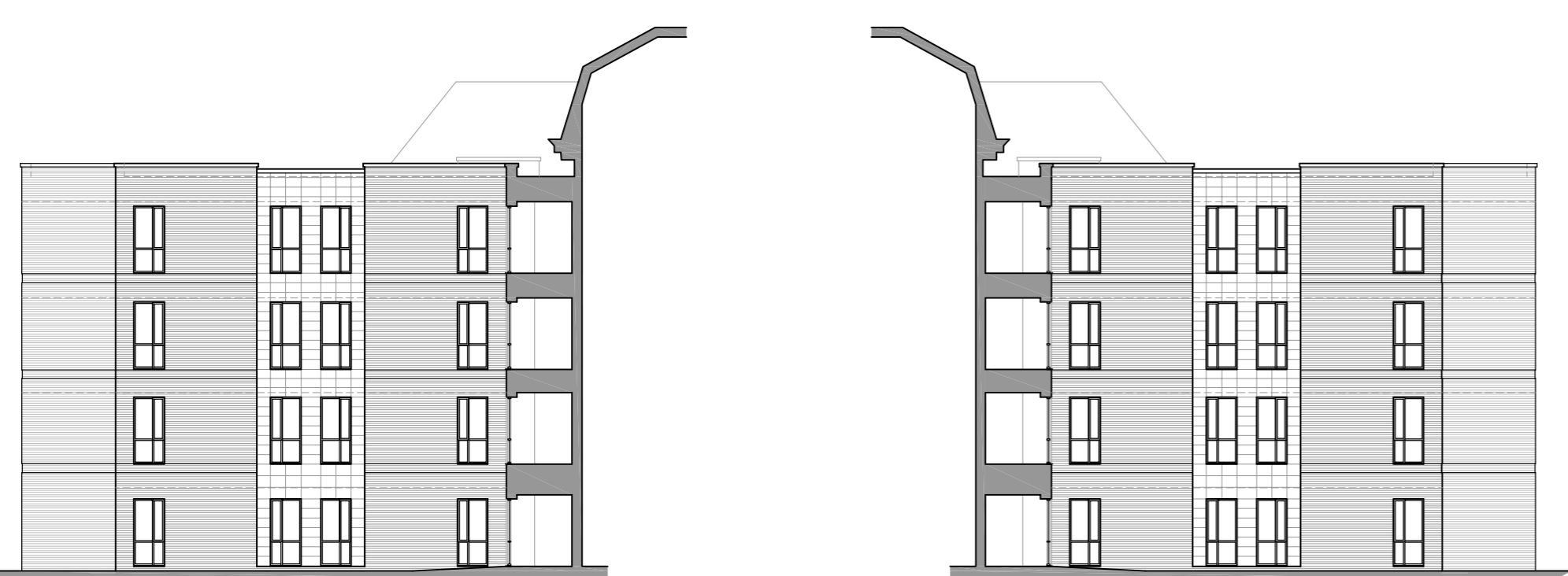
PROPOSED ELEVATION H-H
1:200



PROPOSED ELEVATION F-F
1:200

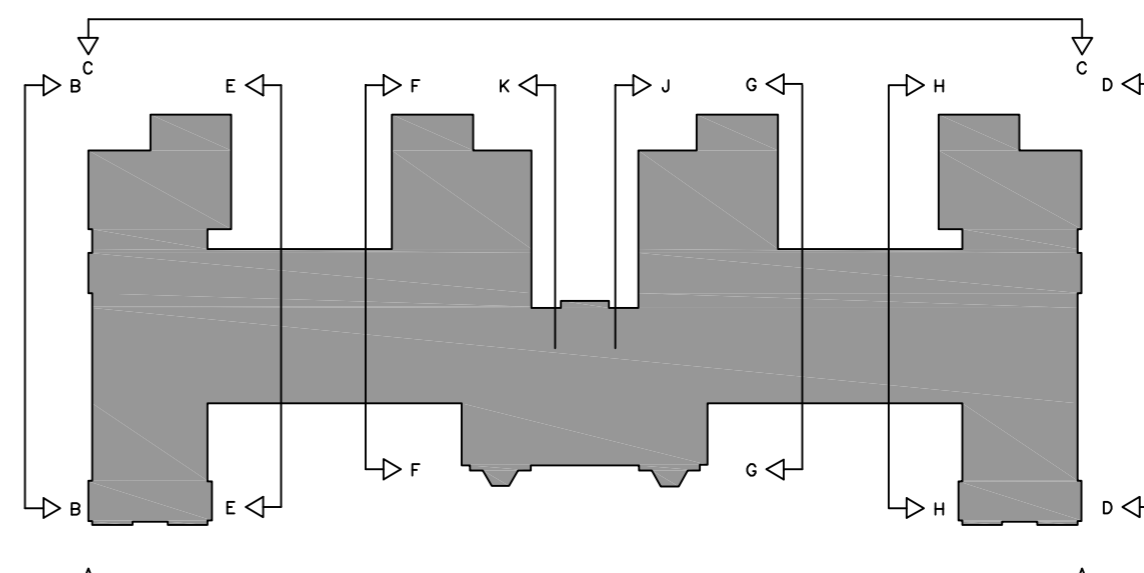


PROPOSED ELEVATION G-G
1:200



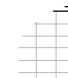



PROPOSED ELEVATION J-J
1:200

PROPOSED ELEVATION K-K
1:200



ELEVATION KEY PLAN
NTS.

- EXTERNAL MATERIALS KEY:
-  POLYESTER POWDER COATED ALUMINIUM WINDOW
 -  TRANSLUCENT GLASS PANELS
 -  TERRACOTTA RAINSCREEN CLADDING
 -  FACING BRICK WITH 15mm. RECESSED FEATURE BANDING

Preliminary

PROJECT: Student Accommodation
Sheraton Park
Durham
for Alumno Developments

TITLE: Proposed Elevations
Neville House

ORIGINATOR: MJR	SCALE: 1:200	SHEET SIZE: A1	DATE: OCT. 2013
PROJECT NUMBER: 11167	DRAWING NUMBER: 2013	REV: P7	

Howarth Litchfield Partnership

CHARTERED ARCHITECTS 4 Old Elvet, Durham, DH1 3HL
 CHARTERED BUILDING SURVEYORS T: Durham 0191 3848470
 DESIGN PROJECT MANAGERS F: 0191 3841424
 INTERIOR DESIGN CONSULTANTS 16-25 Bastwick Street, London, EC1V 3PS
 T: 02077 251800
 W: www.howarthlitchfield.co.uk E: hlp@hlp.co.uk

© Copyright and all intellectual property rights remain vested in Howarth Litchfield Partnership Limited